

## Article datasheet

**Customer name : CLEARWAY**

**Reference - product name: HSTPSSS040008P - PLATE SET 400MM 0.8mm**

**Material : Stainless Steel 201 – Both Face polished**

Application / Market : Strip doors

**Issue date : 13<sup>th</sup>, November 2012**

Modification date :

Number :

Datasheet diffusion:

• Direction	• R&D	• Reception / Shipping
• Plant manager	Personnel management	Team leader
Financial & Administrative manager	Accounts department (Customers & Suppliers)	Team leader assistant
• Commercial director	• Purchasing dept.	Operator
Production manager	Maintenance	
• Quality manager	Supply chain	

Distribution list:

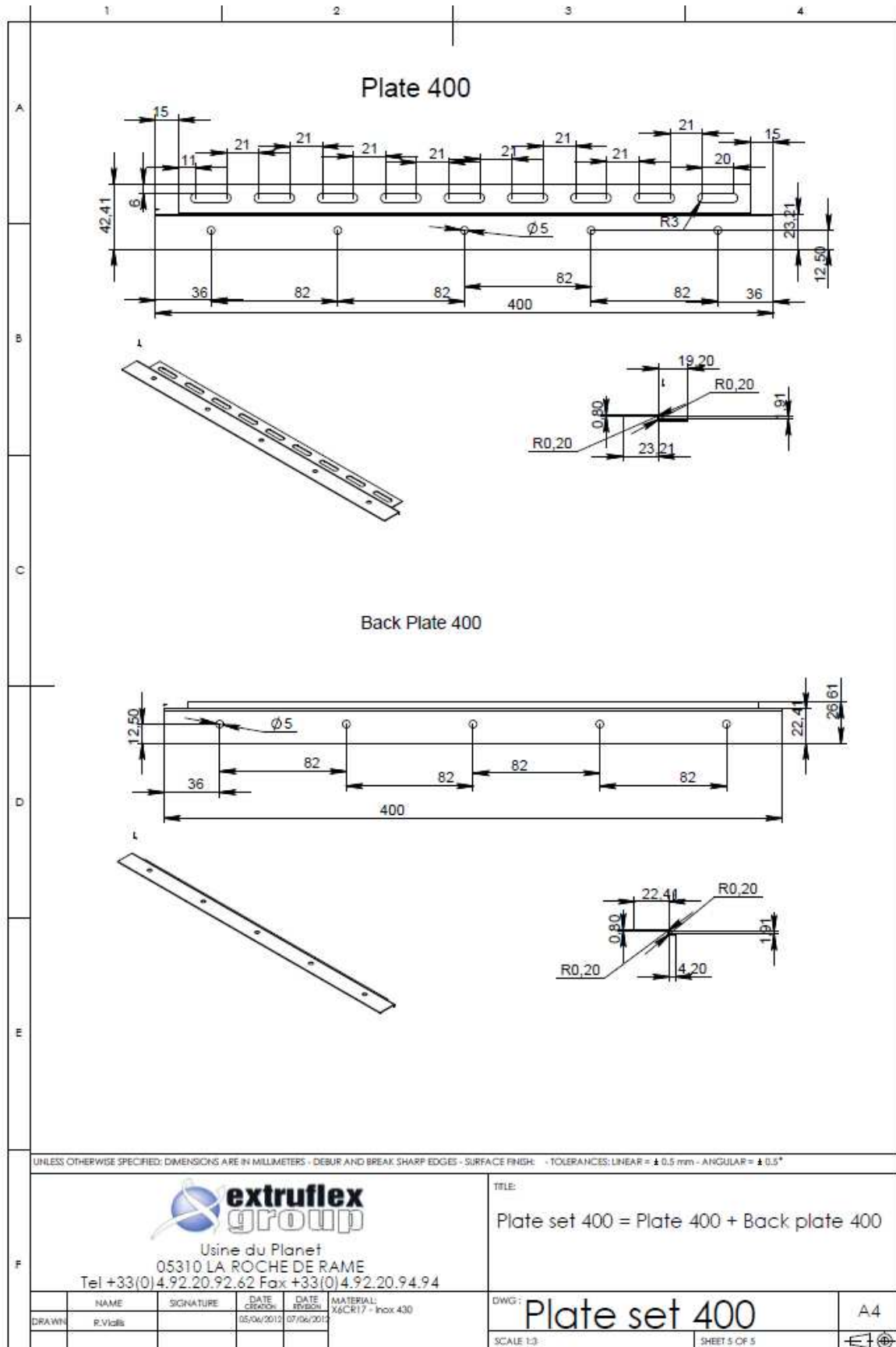
J. Valat, S. Vacca, R. Viallis, A. Lasch, P. Bouisset, W. Adams, JM. Chartier, V. Manai, H. Mathieu, J. REY, G. Teissedre, N. Domeny

Cc: P. Chambriard

Modifications	Date	Index#	Writing		Approval	
			Name	visa	Name	visa
Creation	13/11/2012	1	R. Viallis		R. Viallis	
Modification	25/11/2013	2	R. Viallis		R. Viallis	

Comments: Article code changed to match previous one.

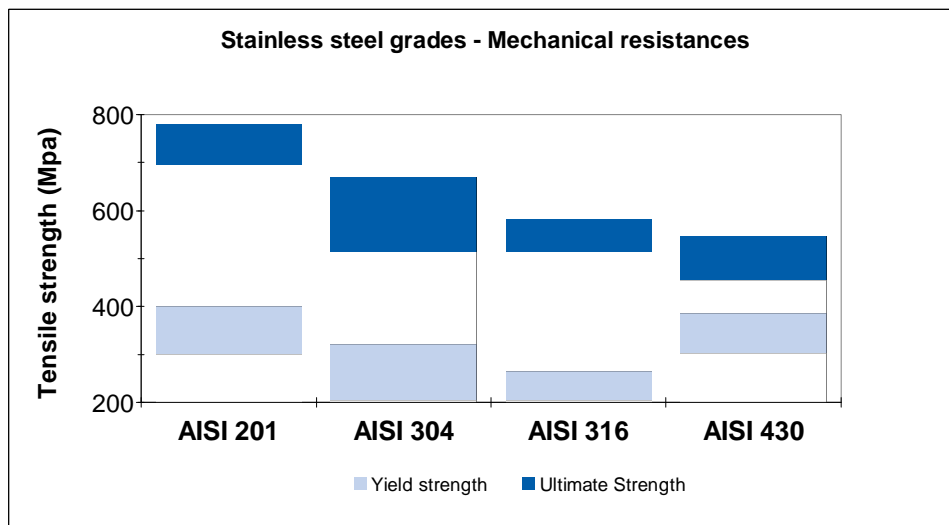
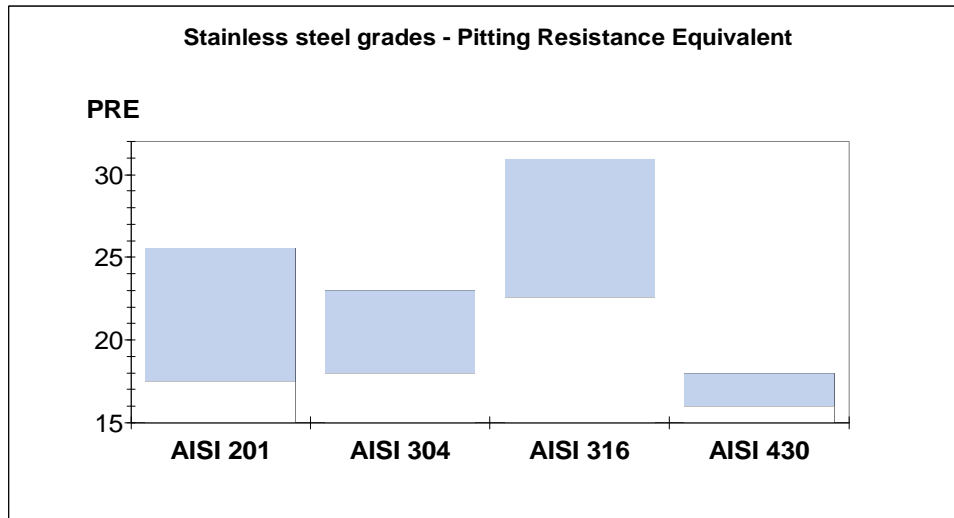
# 1. Plate sets design




## 2. Manufacturing Specifications:

Material to be used:

Stainless steel 201 – Both face polished



		AISI 201	AISI 304	AISI 316	AISI 430
Corrosion resistance		++	++	+++	+
Mechanical resistance		++	++	++	++

Dimensions & Tolerance:

To be checked on the drawings above

Packaging(Transfer and sales):

Box	YES	Dimensions: L420 x l70 x h45	Material : Cardboard Boxes
Quantity	50 sets	50 plates on one side / 100 back plate on the other side	Not mixed / In the same box but separate sides
Water absorber	NO		
How to	The box has to be adjusted so that the plates don't move in transport		

Pallet and transport (Transfer):

	Dimensions	Material	Number of box/pallet	Number of box/raw	Net weight	Gross weight
Pallets	800X600	Treated wood	165	16	1394 Kg	1422 Kg

Labels:

**A. Top label or printing**



Position : Centered on the top of the box

Size : 30mm X 100 mm

## B. Side label or printing

DESC : PLATE SET  
SIZE : HSTPSSSS0400  
MATERIAL : STAINLESS STEEL  
QTY : 50  
NET WEIGHT : 8.4 KG  
GROSS WEIGHT : 8.5 KG  
CARTON NO : (number of the carton)  
POLISHING : YES

Position : On both sides of the boxes (sides 70x45 mm)

Size : 60 X 40 mm

## 3. QUALITY CHECK

Test	Requirement	Tolerance		Comments
Polishing	No scratches			
Thickness	0.8 mm	+0.05	-0.05	
Weight	8.5 Kg Gross weight	-10 grams	+10 grams	