

# CLIC dowel nail

## Technical data sheet

12/2014 1

### 1. Areas of application

CLIC dowel nail for the time-saving mounting of cables and pipes using CLIC pipe clamps in masonry.

### 2. Installation guide

- Drill a 6 mm Ø hole
- Put the dowel nail through the hole of the CLIC pipe clamp and push it into the drill-hole.

### 3. Product details

EF-Art.-No	Discription	Nail length in mm	Content sales unit (piece)
A88.431	CLIC DSN 30	31	200
A88.432	CLIC DSN 40	40	200

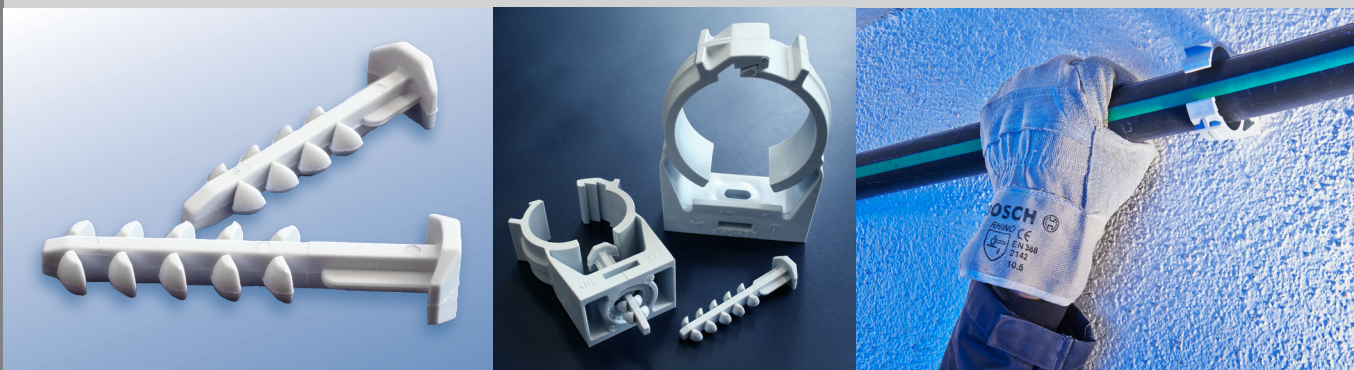
### 4. Product benefits/properties

Excellent clamping effect due to the special shape of the nail head. For easy mounting of CLIC pipe clamps, no screws or plugs required.

The dowel nails CLIC DSN 30 and CLIC DSN 40 are, due to their small width of only 4,5mm, suitable for time- and effort-saving mounting.

### 5. Technical data

Material	Polyamid PA 6
Halogen	halogen-free
Standard colours	light grey



#### Fixing Technology

Egli, Fischer & Co. Ltd., Zurich

Gotthardstrasse 6 | 8022 Zurich | Switzerland | Phone +41 44 209 82 22 | Fax +41 44 201 22 75 | be@efco.ch | www.efco.ch

International contact: Phone +41 44 209 82 32 | info@clit-original.com | www.clit-original.com

## 5. Technical data (cont.)

UV	UV stabilised
Temperature range	-20°C to +85°C
Silicon	silicon-free
Weight per piece	CLIC DSN 30: 0,7 g CLIC DSN 40: 0,8 g
Maximum load (CLIC DSN 30)	concrete 200 N solid brick 200 N hollow brick 150 N aerated concrete 50 N plasterboard (25 mm) 70 N
Breaking load (CLIC DSN 30)	concrete 340 N solid brick 330 N hollow brick 31 N aerated concrete 75 N plasterboard (25 mm) 85 N

## 6. Testings/authorizations/specifications/compliance

REACH, RoHS

## 7. Distributor

**Eglic, Fischer & Co. Ltd., Zurich**  
 Gotthardstrasse 6 | Post Box 2265 | 8022 Zurich | Switzerland

*The recommendations and data given are based on our experience to date and are standard values. No liability can be assumed in connection with their usage and processing.*

*For further technical information please refer to our technical service*

## Fixing Technology

**Eglic, Fischer & Co. Ltd., Zurich**  
 Gotthardstrasse 6 | 8022 Zurich | Switzerland | Phone +41 44 209 82 22 | Fax +41 44 201 22 75 | [be@efco.ch](mailto:be@efco.ch) | [www.efco.ch](http://www.efco.ch)  
 International contact: Phone +41 44 209 82 32 | [info@cllic-original.com](mailto:info@cllic-original.com) | [www.cllic-original.com](http://www.cllic-original.com)