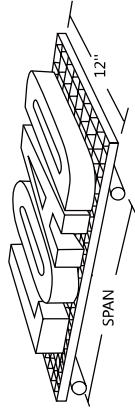


MOLDED GRATING



Uniform Load Deflection Table

Load	NO.01 H25 Mesh Size:38x38											
	Span		200		300		500		750		1000	
	100	150	100	150	100	150	100	150	100	150	1000	1500
500	0.24	0.49	0.73	1.22	1.82	2.43	3.65	4.86	3106	2000	4.86	3106
700	0.89	1.77	2.66	4.44	6.65	8.87	13.31	1584	959	2000	13.31	1584
900	2.35	4.69	7.04	11.73								

Load	NO.02 H25 Mesh Size 40x40											
	Span		200		300		500		750		1000	
	100	150	100	150	100	150	100	150	1000	1500	2000	Max Rec.Load
500	0.26	0.51	0.77	1.28	1.92	2.56	3.84	5.11	2601	2000	5.11	2601
700	0.94	1.89	2.83	4.72	7.08	9.43	14.15	1333	812	2000	14.15	1333
900	2.53	5.06	7.58	12.64								

Load	NO.03 H30 Mesh Size 38x38											
	Span		200		300		500		750		1000	
	100	150	100	150	100	150	1000	1500	2000	Max Rec.Load	Max Rec.Load	
500	0.18	0.36	0.55	0.91	1.36	1.82	2.73	3.64	3293	2000	3.64	3293
700	0.64	1.29	1.93	3.22	4.83	6.44	9.66	12.89	1680	2000	12.89	1680
900	1.72	3.43	5.15	8.59	12.89				1016	2000	12.89	1016
1100	3.84	7.67	11.51						680	2000	11.51	680

Load	NO.04 H30 Mesh Size 40x40											
	Span		200		300		500		750		1000	
	100	150	100	150	100	150	1000	1500	2000	Max Rec.Load	Max Rec.Load	
500	0.17	0.33	0.5	0.83	1.25	1.67	2.5	3.33	2907	2000	3.33	2907
700	0.61	1.21	1.82	3.03	4.54	6.05	9.08	12.1	1481	2000	12.1	1481
900	1.6	3.19	4.79	7.98	11.97	15.96			897	2000	11.97	897
1100	3.46	6.92	10.38						603	2000	10.38	603

Load	NO.05 H38 Mesh Size 38x38											
	Span		200		300		500		750		1000	
	100	150	100	150	100	150	1000	1500	2000	Max Rec.Load	Max Rec.Load	
500	0.07	0.15	0.22	0.36	0.54	0.73	1.09	1.45	4747	2000	1.45	4747
700	0.25	0.5	0.75	1.26	1.89	2.51	3.77	5.03	2422	2000	5.03	2422
900	0.65	1.3	1.95	3.25	4.86	6.51	9.76	13.02	1465	2000	13.02	1465
1100	1.44	2.88	4.31	7.19	10.79	14.38			981	2000	14.38	981
1300	2.79	5.58	8.38	13.96					702	2000	13.96	702

Load	NO.06 H50 Mesh Size 50x50											
	Span		200		300		500		750		1000	
	100	150	100	150	100	150	1000	1500	2000	Max Rec.Load	Max Rec.Load	
500	0.04	0.08	0.11	0.19	0.29	0.38	0.57	0.76	10769	2000	0.76	10769
700	0.13	0.26	0.39	0.66	0.99	1.32	1.97	2.63	5494	2000	2.63	5494
900	0.35	0.69	1.04	1.74	2.6	3.47	5.21	6.94	3323	2000	6.94	3323
1100	0.76	1.51	2.27	3.78	5.67	7.57	11.35		2225	2000	11.35	2225
1300	1.45	2.89	4.34	7.23	10.84	14.46			1593	2000	14.46	1593
1500	2.53	5.07	7.6	12.67					1196	2000	12.67	1196

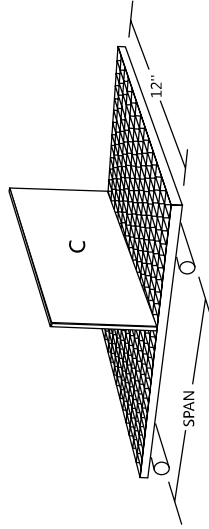
Load	NO.07 H25 Mesh Size 25x100											
	Span		200		300		500		750		1000	
	100	150	100	150	100	150	1000	1500	2000	Max Rec.Load	Max Rec.Load	
500	0.16	0.31	0.47	0.78	1.18	1.57	2.35	3.14	4752	2000	3.14	4752
700	0.59	1.17	1.76	2.93	4.39	5.85	8.78	11.71	2425	2000	11.71	2425
900	1.56	3.12	4.68	7.79	11.69				1467	2000	11.69	1467
1100	3.43	6.87	10.3						982	2000	10.3	982

Load	NO.08 H38 Mesh Size 38x152											
	Span		200		300		500		750		1000	
	100	150	100	150	100	150	1000	1500	2000	Max Rec.Load	Max Rec.Load	
500	0.05	0.09	0.14	0.23	0.34	0.45	0.68	0.91	8368	2000	0.91	8368
700	0.15	0.3	0.45	0.75	1.13	1.5	2.25	3	4269	2000	3	4269
900	0.38	0.76	1.14	1.9	2.86	3.81	5.71	7.61	2583	2000	7.61	2583
1100	0.83	1.66	2.49	4.15	6.23	8.3	12.45		1729	2000	12.45	1729
1300	1.59	3.18	4.78	7.96	11.94				1238	2000	11.94	1238
1500	2.79	5.59	8.38	13.97					930	2000	13.97	930

Load	NO.09 H30 Mesh Size 20x20 (mini)											
	Span		200		300		500		750		1000	
	100	150	100	150	100	150	1000	1500	2000	Max Rec.Load	Max Rec.Load	
500	0.11	0.22	0.33	0.54	0.82	1.09	1.63	2.18	4123	2000	2.18	4123
700	0.38	0.77	1.15	1.92	2.88	3.84	5.76	7.68	2104	2000	7.68	2104
900	1.02	2.04	3.06	5.11	7.66	10.21			1273	2000	10.21	1273
1100	2.23	4.45	6.68	11.13					852	2000	11.13	852

Load	NO.10 H38 Mesh Size 19x19 (mini)											
	Span		200		300		500		750		1000	
	100	150	100	150	100	150	1000	1500	2000	Max Rec.Load	Max Rec.Load	
500	0.06	0.11	0.17	0.28	0.42	0.55	0.83	1.11	7182	2000	1.11	7182
700	0.19	0.38	0.57	0.95	1.42	1.9	2.85	3.8	3664	2000	3.8	3664
900	0.49	0.98	1.46	2.44	3.66	4.88	7.31	9.75	2217	2000	9.75	2217
1100	1.05	2.11	3.16	5.26	7.89	10.53			1484	2000	10.53	1484
1300	2.01	4.03	6.04	10.07					1062	2000	10.07	1062
1500	3.53	7.06	10.59						798	2000	10.59	798

MOLDED GRATING



Line Load Deflection Table

Load	NO.01 H25 Mesh Size 38x38								
	Span in mm		Load in kg/m ²		Max Rec.Load				
Span	100	200	300	500	750	1000	1500	2000	
500	0.78	1.56	2.33	3.89	5.84	7.78	11.67		1213
700	2.03	4.06	6.09	10.15					867
900	4.17	8.34	12.51						674

Load	NO.02 H25 Mesh Size 40x40								
	Span in mm		Load in kg/m ²		Max Rec.Load				
Span	100	200	300	500	750	1000	1500	2000	
500	0.81	1.62	2.44	4.06	6.09	8.12	12.18		1024
700	0.94	2.15	4.3	6.45	10.75				731
900	4.51	9.02	13.53						569

Load	NO.03 H30 Mesh Size 38x38								
	Span in mm		Load in kg/m ²		Max Rec.Load				
Span	100	200	300	500	750	1000	1500	2000	
500	0.58	1.16	1.75	2.91	4.36	5.82	8.73	11.64	1386
700	1.47	2.95	4.42	7.36	11.04	14.73			919
900	3.05	6.11	9.16	15.26					715
1100	5.58	11.16							497

Load	NO.04 H30 Mesh Size 40x40								
	Span in mm		Load in kg/m ²		Max Rec.Load				
Span	100	200	300	500	750	1000	1500	2000	
500	0.53	1.07	1.6	2.67	4	5.33	8	10.67	1136
700	1.38	2.76	4.14	6.91	10.36	13.81			811
900	2.83	5.67	8.5	14.17					631
1100	5.04	10.09	15.13						516

Load	NO.05 H38 Mesh Size 38x38								
	Span in mm		Load in kg/m ²		Max Rec.Load				
Span	100	200	300	500	750	1000	1500	2000	
500	0.23	0.46	0.7	1.16	1.74	2.32	3.48	4.64	1854
700	0.57	1.15	1.72	2.87	4.31	5.75	8.62	11.49	1325
900	1.16	2.31	3.47	5.79	8.68	11.57			1030
1100	2.09	4.18	6.28	10.46					843
1300	3.44	6.87	10.31						713

Load	NO.06 H50 Mesh Size 50x50								
	Span in mm		Load in kg/m ²		Max Rec.Load				
Span	100	200	300	500	750	1000	1500	2000	
500	0.12	0.24	0.37	0.61	0.92	1.22	1.83	2.44	4206
700	0.3	0.6	0.9	1.5	2.26	3.01	4.51	6.02	3004
900	0.62	1.23	1.85	3.09	4.63	6.17	9.26	12.34	2337
1100	1.1	2.2	3.3	5.5	8.26	11.01			1912
1300	1.78	3.56	5.34	8.9	13.35				1618
1500	2.7	5.41	8.11	13.51					1402

Load	NO.07 H25 Mesh Size 25x100								
	Span in mm		Load in kg/m ²		Max Rec.Load				
Span	100	200	300	500	750	1000	1500	2000	
500	0.5	1	1.51	2.51	3.77	5.02	7.53	10.04	1856
700	1.34	2.68	4.01	6.69	10.03	13.38			1326
900	2.77	4.54	8.31	13.86					1031
1100	5	9.99							844

Load	NO.08 H38 Mesh Size 38x152								
	Span in mm		Load in kg/m ²		Max Rec.Load				
Span	100	200	300	500	750	1000	1500	2000	
500	0.14	0.29	0.43	0.72	1.09	1.45	2.17	2.9	3269
700	0.34	0.69	1.03	1.72	2.57	3.43	5.15	6.86	2335
900	0.68	1.35	2.03	3.38	5.08	6.77	10.15	13.54	1816
1100	1.21	2.41	3.62	6.04	9.06	12.07			1486
1300	1.96	3.92	5.88	9.8	14.7				1257
1500	2.98	5.96	8.94	14.9					1090

Load	NO.09 H30 Mesh Size 20x20 mini								
	Span in mm		Load in kg/m ²		Max Rec.Load				
Span	100	200	300	500	750	1000	1500	2000	
500	0.35	0.7	1.04	1.74	2.61	3.48	5.22	6.96	1611
700	0.88	1.76	2.63	4.39	6.59	8.78	13.17		1150
900	1.82	3.63	5.45	9.08	13.62				895
1100	3.24	6.48							732

Load	NO.10 H38 Mesh Size 19x19 mini								
	Span in mm		Load in kg/m ²		Max Rec.Load				
Span	100	200	300	500	750	1000	1500	2000	
500	0.18	0.36	0.53	0.89	1.33	1.77	2.66	3.54	2805
700	0.43	0.87	1.3	2.17	3.25	4.34	6.51	8.68	2004
900	0.87	1.73	2.6	4.33	6.5	8.67	13		1559
1100	1.53	3.06	4.59	7.66	11.48				1275
1300	2.48	4.96	7.43	12.39					1079
1500	3.77	7.53	11.3						935

NOTES:

- 1.The above information is just for your reference, and cannot be used as the guarantee when using;
- 2.Endura provide loading data under any span ,please contact Endura for these information.