

Röchling

Industrial

Röchling Industrial

Sneak SUSTAPEEK

24.11.2020 |

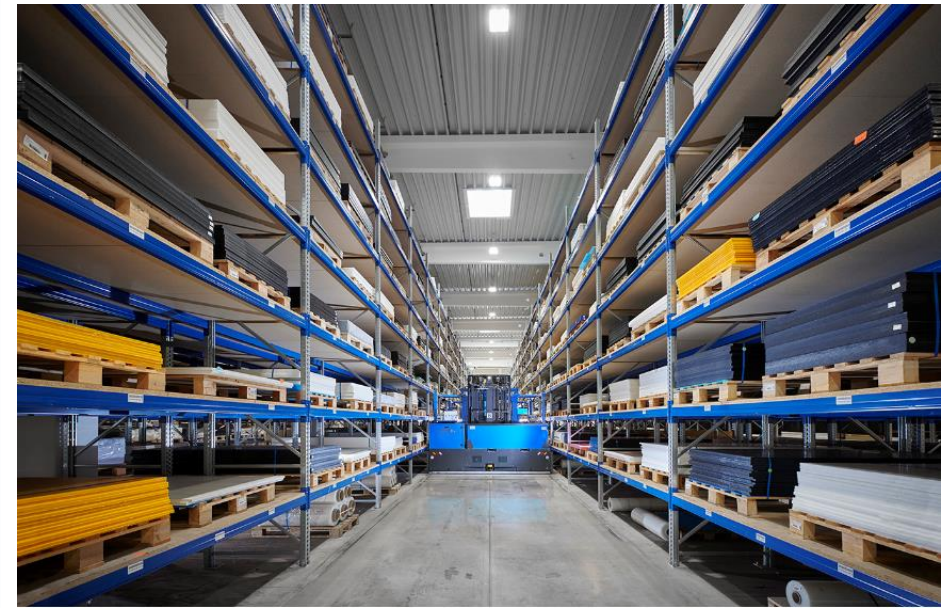


Sneak SUSTAPEEK

- 1 Stock program of SUSTAPEEK
- 2 SUSTAPEEK for Oil & Gas
- 3 Further news

Huge stock program!

- Röchling has an exceptional range of SUSTAPEEK products from very thin plates of just 1mm thickness up to very big plates of 130mm thickness
Further sizes on request possible
- Biggest portfolio on SUSTAPEEK tubes and rods
- Greatest stock for SUSTAPEEK in Europe
- Fast delivery time!
- Various lengths are available, including cut-to-size
- Colors available from stock: Natural and Black (not all dimensions)
- Custom colors available upon request



SUSTAPEEK sheets

Natural & Black

Form (width)	Color	Thickness	Color	Thickness
1000 mm	Natural	8,10,12,16,20,25,30,50,60	Black	-
1000 mm (Calandered)	Natural	1,2,3,4,5	Black	-
620 mm	Natural	5,6,8,10,12,16,20,25,30,35,40,45,50,60,70,80,90	Black	5,6,8,10,12,16,20,25,30
500 mm	Natural	5,6,8,10,12,16,20,25,30,40,50	Black	6,30
400 mm	Natural	100,130	Black	-

MOD / GLD 140

Form (width)	MOD	Thickness	GLD 140	Thickness
620 mm	Black	6,8,10,12,15,16,20,25,30,40,50	Natural	6,8,10,25,30,50,60
500 mm	Black	8,10,16,20,25,40	Natural	-

SUSTAPEEK sheets

FG & MG

Form (width)	FG	Thickness	MG	Thickness
1000 mm	Natural	8	-	-
620 mm	Natural	6,8,10,12,16,20,25,30,40,50,60	Natural	5,6,8,10,12,16,20,25,30,40,50
620 mm	-	-	Black	10,16,20,30,35
500 mm	-	-	Black	10,20,30

GF 30 & CF 30

Form (width)	GF 30	Thickness	CF 30	Thickness
620 mm	Natural	8,10,12,15,16,18,20,25,30,35,40,50	-	-
500 mm	Natural	6,8,10,20,30	Black	16
395 mm	-	-	Black	6,7,8,9,10,12,13, 14,15,16,20,25,28,30,31,35, 40,50,55,60,65,70,85

SUSTAPEEK rods

Natural & Black

Form (length)	Color	Diameter	Color	Diameter
3000 mm	Natural	5,6,8,10,12,15,16,18,20,22,25, 28,30,32,35,36,40,45,50,55, 60,65,70,75,80,90,100,110,120 140,150,160,180,200	Black	6,8,10,12,16,20,22,25,30,32,35, 40,45,50,55,60,70,75,90,100
2000 mm	Natural	10,32,35,55,60,100	Black	55
1000 mm	Natural	5,6,8,10,12,15,16,18,20,22,25, 28,30,32,35,36,40,45,50, 55,60,65,70,75,80,85,90,95, 100,110,120,125,130,135, 140,150,160,180,190,200	Black	6,8,10,12,16,20,22,25,28, 30,32,35,40,45,50,55,60,70, 75,85,90,100

SUSTAPEEK rods

MOD / GLD 140

Form (length)	MOD	Diameter	GLD 140	Diameter
3000 mm	Black	10,12,16,20,25,28,30,32,35,40,50,55,60,80	Natural	28,32,35,40,60,100
2000 mm	Black	100	Natural	100
1000 mm	Black	6,8,10,12,16,18,20,25,28,30,32,35,40,45,50,55,60,65,70,75,80	Natural	-

FG & MG

Form (length)	FG	Diameter	MG	Diameter
3000 mm	Natural	8,10,12,15,16,18,20,22,25,28,30,32,35,40,45,50,55,60,65,70,75,80,85,90,100,110,120,140,150	Natural /black	6,8,10,12,16,20,25,30,36,40,50,60,70,80,100,120
2000 mm	Natural	140	Black	10,60
1000 mm	Natural	8,16,20,25,32,35,40,45,50,55,65,75,80,85,100,120,140,150	Natural	6,8,16,20,25,30,32,35,40,45,50,60,80,100,120

SUSTAPEEK rods

GF 30 & CF 30

Form (length)	GF 30	Diameter	CF 30	Diameter
3000 mm	Natural	5,6,8, 10 ,12,15, 16,20 ,22, 25 ,28, 30 ,32, 35,36,40 ,45, 50 ,55, 60 ,70 ,75, 80 ,90,100	Black	16,18,20,22,25,30,35,40,45,50, 55,60,75,80
2000 mm	Black	60	Black	-
1000 mm	Natural	6,8,10,12,16,18,20,22,25,28, 30,35,40,45,50,60,70,75,80,90	Black	15,16,18, 20 ,22, 25,30 ,35, 40 ,45, 50 ,55, 60 ,75,80

SUSTAPEEK tubes

Natural

Form (length)	Color	Diameter (AD)
3000 mm	Natural	30/20, 30/15, 40/30, 50/40, 40/25, 40/20, 60/50, 50/30, 56/40, 60/45, 70/50, 90/70, 80/50, 100/70, 115/80, 140/100, 160/130, 200/150 25,30,40,45,50,55,56,60,70,80,90, 100,115,140,160,200
2000 mm	Natural	25,30,36,40,45,50,60,70,130, 160,180,200,210,240,250,280
1000 mm	Natural	13,25,30,36,40,45,50,55,60,62,66,70,75, 90,100,110,115,120,125,140,160,180,200,220,240,260,280

FG

Form (length)	Color	Diameter (AD)
3000 mm	Natural	45,50
1000 mm	Natural	95,230

- 1 Stock program of SUSTAPEEK
- 2 SUSTAPEEK for Oil & Gas
- 3 Further news

SUSTAPEEK for Oil & Gas

PEEK (Polyetheretherketone) - SustaPEEK

SustaPEEK Rods:

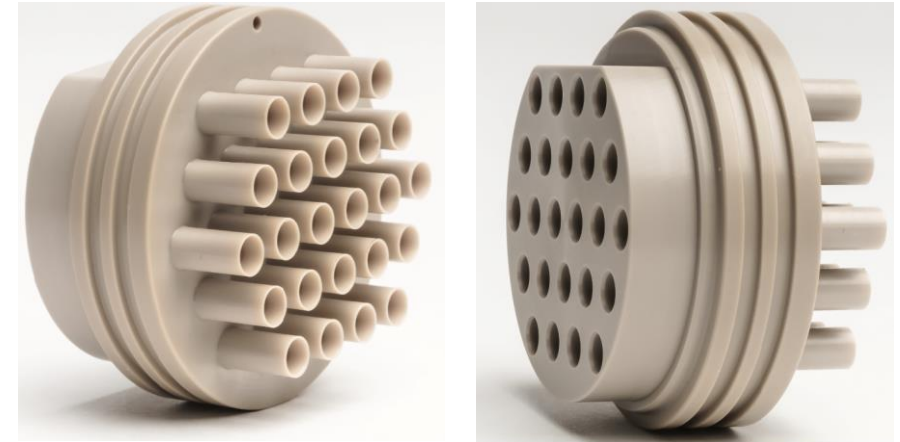
- Diameters up to 200 mm

SustaPEEK Sheets:

- Thicknesses up to 150 mm

SustaPEEK Tubes:

- Maximum Inside Diameter/Outside Diameter of 260 mm/180 mm
- Various lengths are available, including cut-to-size
- Colors available from stock: Natural and Black (not all dimensions)
- Custom colors available upon request



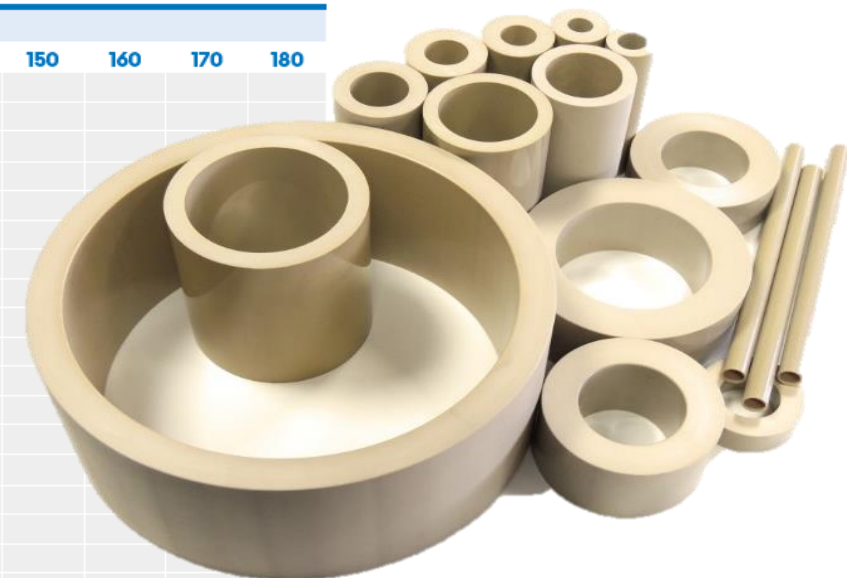
Product example:
Electrical connectors

SUSTAPEEK for Oil & Gas

PEEK (Polyetheretherketone) - SustaPEEK

Product possibilities and stock range of SustaPEEK tubes

Outer Diameter mm	Inner Diameter																			
	10	15	20	25	30	35	40	45	50	60	70	80	100	120	130	140	150	160	170	180
20	•	•																		
25	•	•	•																	
30	•	•	•	•																
32		•	•	•																
36		•	•	•	•															
40			•	•	•	•														
45			•	•	•	•	•													
50			•	•	•	•	•	•												
56					•	•	•	•	•											
60					•	•	•	•	•	•										
70					•	•	•	•	•	•	•									
75						•	•	•	•	•	•									
80							•	•	•	•	•	•								
85							•	•	•	•	•	•								
90							•	•	•	•	•	•	•							
95							•	•	•	•	•	•	•							
100							•	•	•	•	•	•	•							
115									•	•	•	•	•							
125									•	•	•	•	•	•						
140										•	•	•	•	•						
150											•	•	•	•						
160											•	•	•	•	•					
170												•	•	•	•	•				
200													•	•	•	•	•			
210															•	•	•	•		
260																	•	•	•	•



Product example:
Back up Rings, Anti-Extrusion Rings

 = in stock
 = NEW in stock SustaPEEK GF 30
 Further dimensions on request, please contact us

- 1 **Stock program of SUSTAPEEK**
- 2 **SUSTAPEEK for Oil & Gas**
- 3 **Further news**

Further news

SUSTAPEEK as calendered sheets

Quality:

- Better surface quality
- Protective foils on both sides possible

Material saving:

- Due to tighter tolerances you need less machining, e.g. $4,0 \pm 0,2$ mm
- Plates in larger sizes are possible

Lower machining costs:

- In case you need thinner plates, you don't need machining down a thick
- Therefore, no additional costs
- Complex parts can be realized



Further news

Calendered sheets

Our stock and delivery program you can find on our flyers which are available on our download center.

Download Center - Röchling Industrial

Suche: Ansicht: Einträge pro Seite:

Datenmaterial: Marken: Sprache:

Titel	Datenmaterial	Sprache	Dateityp	Dateigröße	Download
Kalandrierte-Platten-DE.pdf	Broschüren	DE	PDF	521.2 kB	<input type="button" value="Download"/>

Röchling
Industrial

Made-to-measure foils



Thin gauge sheets

Short delivery time – many brand materials and thicknesses ex stock

- Down to a thickness of 0.2 mm depending on the material
- With a very high dimensional accuracy
- Different brand materials available like SustaPEEK (PEEK), Sustain® C (POM-C) and Sustamid® (PA)
- Many thicknesses ex stock

For more information please contact:
 Thomas Schälzel | Product Manager | Industry Manager Oil&Gas
 tschoelzel@sustaplast.de | T +49 2621 693-246

Colendered sheets available in different thicknesses and a very high dimensional accuracy

Delivery programme – Calendered sheets

Material	Thickness (mm)	Max. width (mm)	Max. length (mm)	Colors
Sustastor® PPSU (PPSU)	1-8	1,500	Cut to size	various colors
SustaPEEK (PEEK)	1-10	1,500	Cut to size	natural, black
Sustamid® 6 FR (PA6FR)	3-12	1,500	Cut to size	black
Sustavacu® (PA6)	3-8	1,500	Cut to size	black
Sustamid® 6 (PA6)	0.2-16	1,500	Cut to size	natural, black
Sustamid® 6.6 (PA66)	0.5-12	1,500	Cut to size	natural, black
Sustarin® C (POM-C)	0.2-16	1,500	Cut to size	natural, black, blue
Sustadur® PET (PET)	2-20	1,500	Cut to size	natural, black
SustapVDF	0.3-3	1,500	Cut to size	natural, black
SustaPPE	3-18	1,500	Cut to size	grey, black

All thin gauge sheets available with foil on both sides. Other colors are possible on request.

Available ex stock – Calendered sheets

Material	Thickness (mm)	Width (mm)	Length (mm)	Colors
SustaPEEK (PEEK)	1.25/2/3/4/5	1,000	2,000	natural
Sustamid® 6 FR (PA6FR)	5	1,000	2,000	black
Sustavacu® (PA6)	3/4	1,000	2,000	black
Sustamid® 6 (PA6)	0.5/0.8/1/1.5/2/2.5/3/4/5/6/8/10/12/15	1,000	2,000	natural
Sustamid® 6 MCS (PA6)	1/2/3/4/5/6/8/10	1,000	2,000	black
Sustamid® 6.6 (PA66)	0.5/1/1.5/2/3/4/5/6	1,000	2,000	natural
Sustarin® C (POM-C)	0.5/0.8/1/1.5/2/2.5/3/4/5/6/8/10/12/15/16	1,000	2,000	natural
Sustarin® C + double-sided protective film (POM-C)	1/2/3/4/5/6/8/10/12/16	1,000	2,000	black
Sustadur® PET (PET)	2/2.5/3/4/5/6/8/10	1,000	2,000	natural



Our foils are available cut-to-size or delivered on a paper core with a diameter of 76 mm or 152 mm. Other diameters on request.



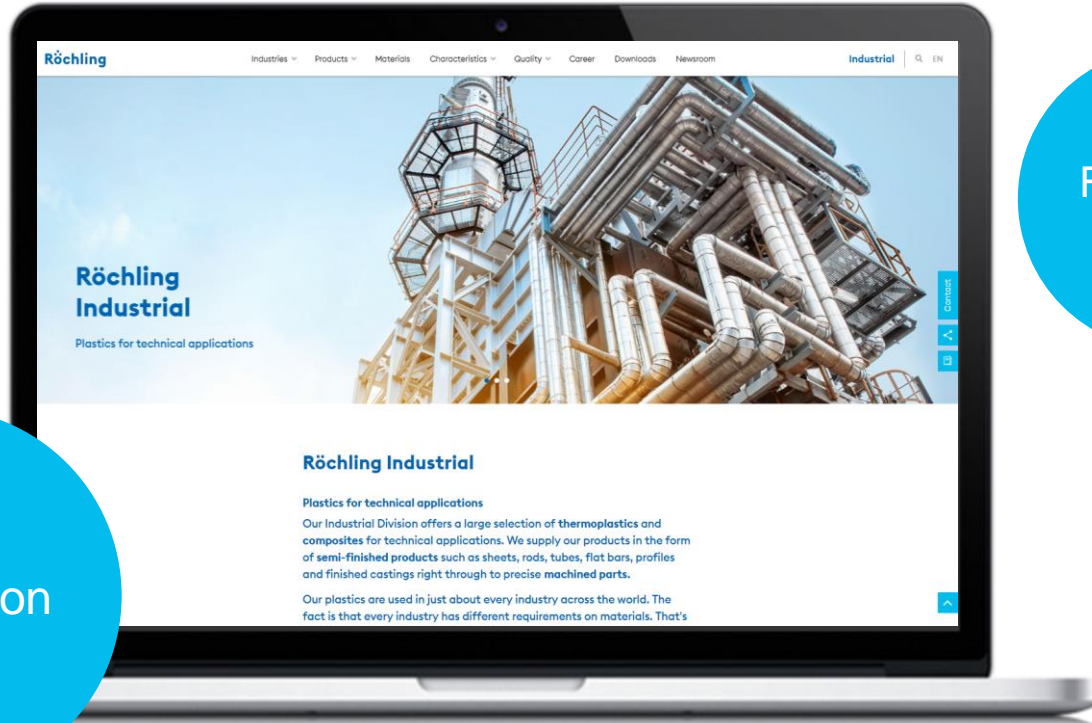
Our foils are available up to a length of 600 m from stock in the colours black and natural.



On our modern systems, we cut your foils precisely to size with high cutting accuracy.

to@sustaplast.de

09/2020 10.439.12.464



More information here:

www.roechling-industrial.com

Follow us on:

