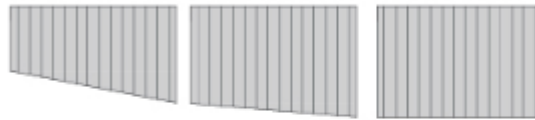
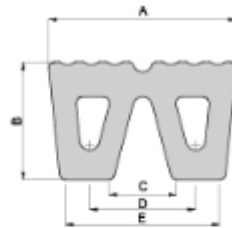
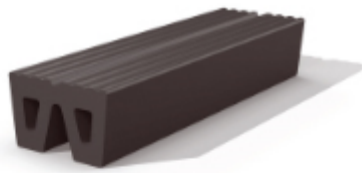


W-Fender



Row fenderset cut to size

Standard dimensions

| A (mm) | B (mm) | C (mm) | D (mm) | E (mm) | Weight (kg/m) |
|--------|--------|--------|--------|--------|---------------|
| 320 | 200 | 100 | 180 | 280 | 51 |
| 400 | 250 | 110 | 220 | 350 | 81 |
| 480 | 300 | 135 | 265 | 420 | 120 |
| 500 | 360 | 125 | 265 | 390 | 156 |
| 500 | 450 | 90 | 250 | 420 | 180 |